



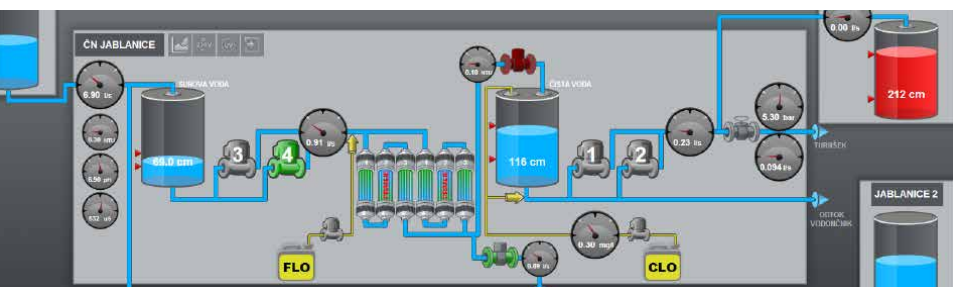
# Monitoring of Water Treatment Systems

*Ellab d.o.o.*

## Water Company KP Velenje

Ellab is a leading Slovenian company in the automation and supervision of water and wastewater systems. For their customer KP Velenje, Ellab built a system of pump stations and water reservoirs with over 60 remote stations as well as three water treatment plants. In a system with over 4.000 tags, Ellab managed to realize real time data exchange over multiple communication media. Within the water company organization, atvise scada is used in a central supervision room (water plant location), in several offices throughout the company and via mobile phones in the field.

"Pure web technology based scada, supporting the capability of working on any device, was one of the decision making factors", said Primož Roser, the Water Division manager of KP Velenje.



**FIND OUT MORE:**

[www.atvise.com](http://www.atvise.com)



**CONTACT**

*Florian Blümel*

*Teamleader Sales*

*Bachmann Visutec GmbH*

*info@bachmann.info*